

EH-RMP and SYCON.net easy manual

This document explains how to use the PROFIBUS master EH-RMP2 and configurator SYCON.NET with the Hitachi EHV+ Programmable Controller. Please refer to the EHV+ application manual (NJI-564*X) about how to use EHV-CoDeSyS.

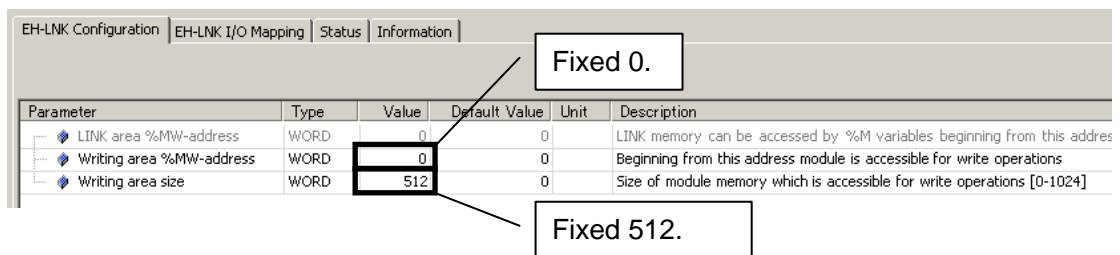
1 Before use

Please check the following points before you use EH-RMP2.

1] I/O assignment of EHV+.

EH-RMP2 is assigned as "EH-LNK". Link parameters are set below.

- Writing area %MW-address is 0.
- Writing area size is 512. (Otherwise, EH-RMP2 doesn't work.)



Parameter	Type	Value	Default Value	Unit	Description
LINK area %MW-address	WORD	0	0		LINK memory can be accessed by %M variables beginning from this address
Writing area %MW-address	WORD	0	0		Beginning from this address module is accessible for write operations
Writing area size	WORD	512	0		Size of module memory which is accessible for write operations [0-1024]

2] Install SYCON.NET

Please install SYCON.NET according to SYCON.NET installer.

3] Plug in USB cable to EH-RMP2.

If popup window appears at right-bottom of screen, PC installs USB driver. USB driver files are shown below.

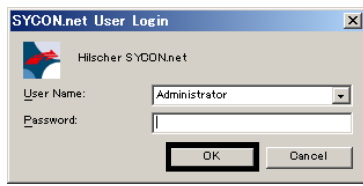
- netx_usb_cdc.inf
- netX_usb_cdc.cat

4] EH-RMP2 connect to EH-IOCP2 by PROFIBUS cable.

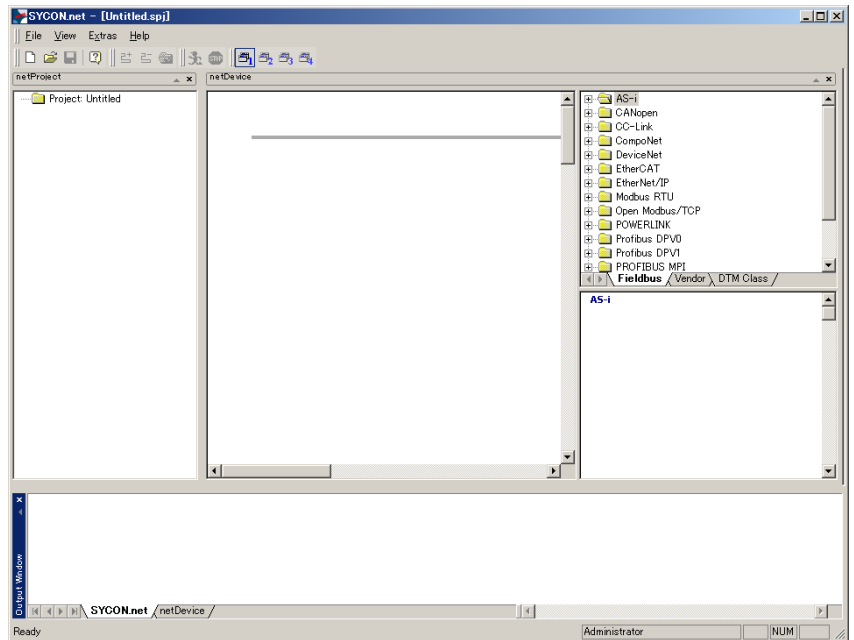
5] Rotary switch of EH-IOCP is 2.

2 How to use SYCON.NET

1] In the first use, user login window is appeared. Please click OK button.

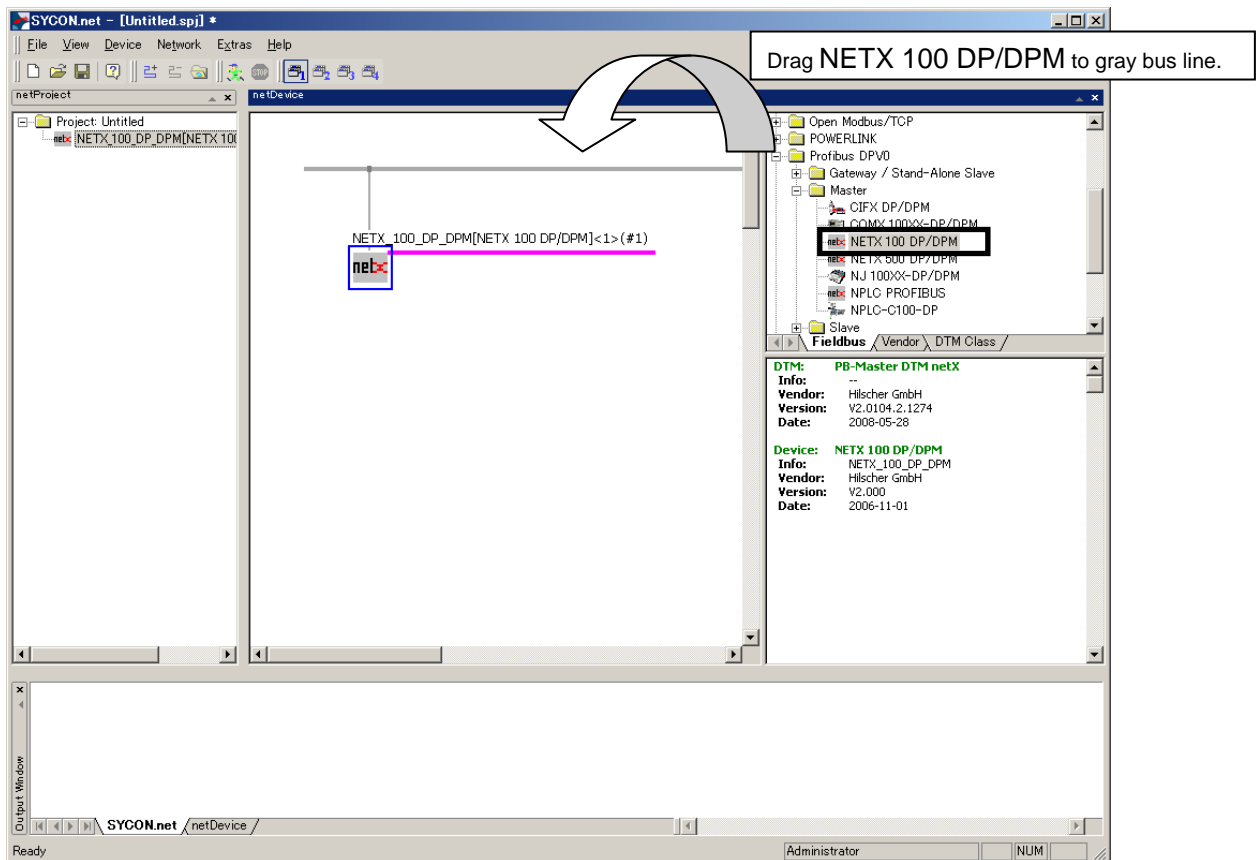


User login window.

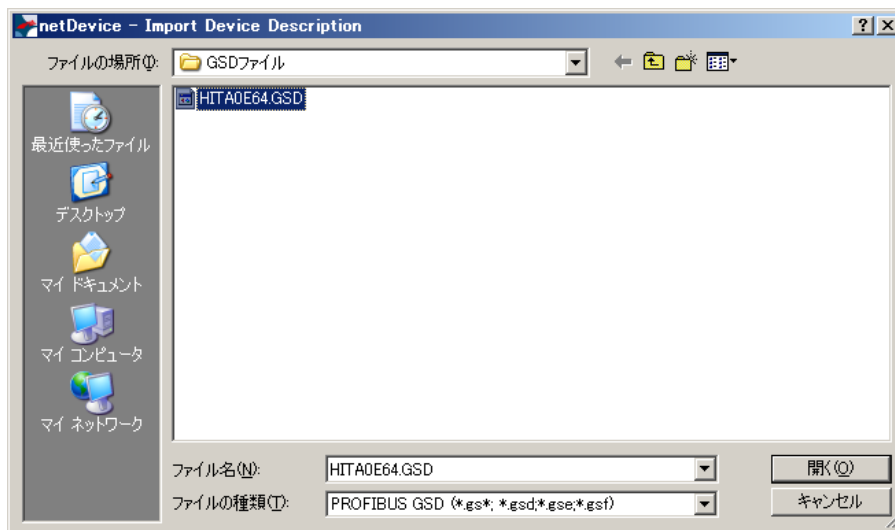


Main window.

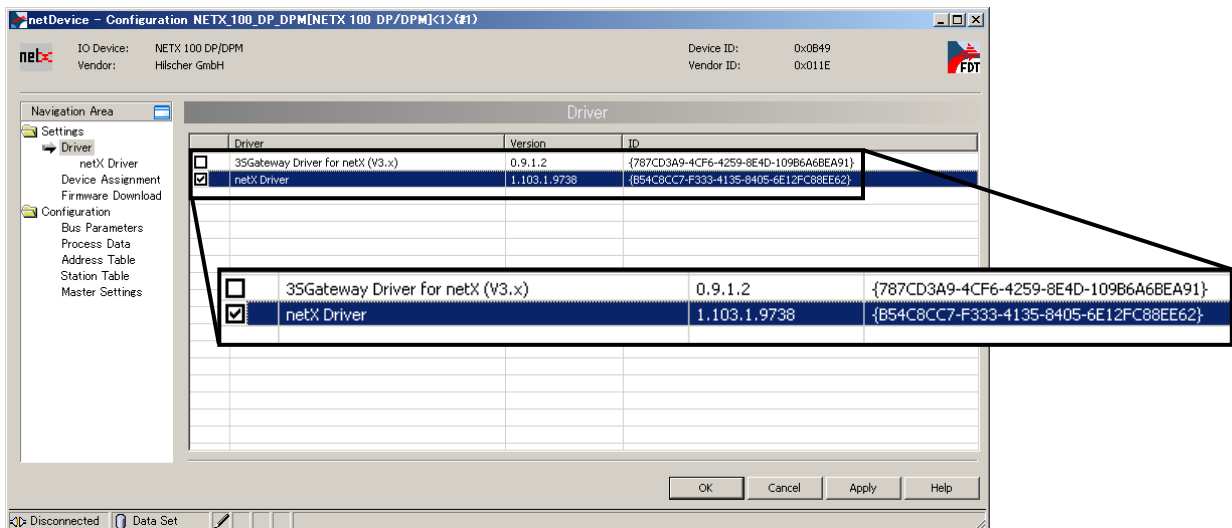
2] Drag “NETX 100 DP/DPM” form device lists to center of screen.



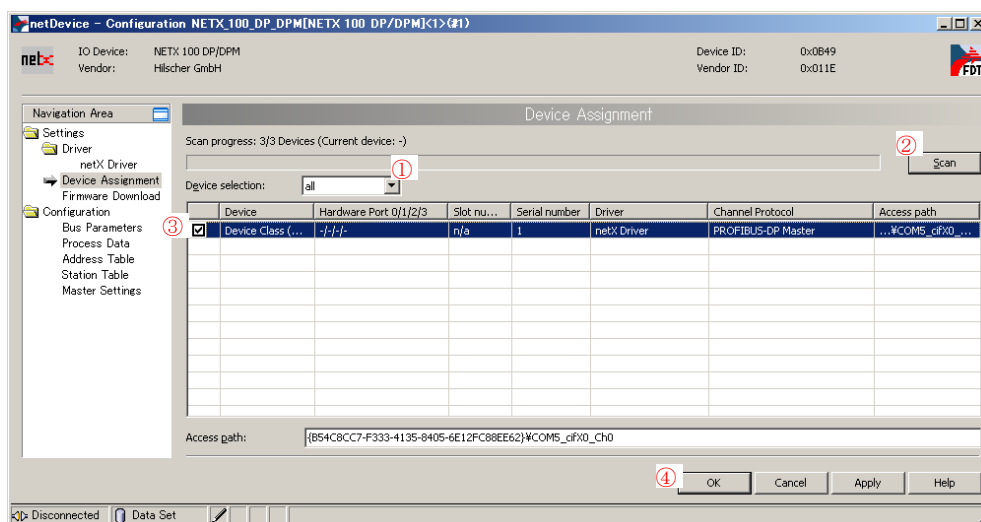
3) SYCON.NET imports GSD file of EH-IOCP2. Click [Network] – [Import Device Descriptions...]. choice “HITA0E64.GSD”



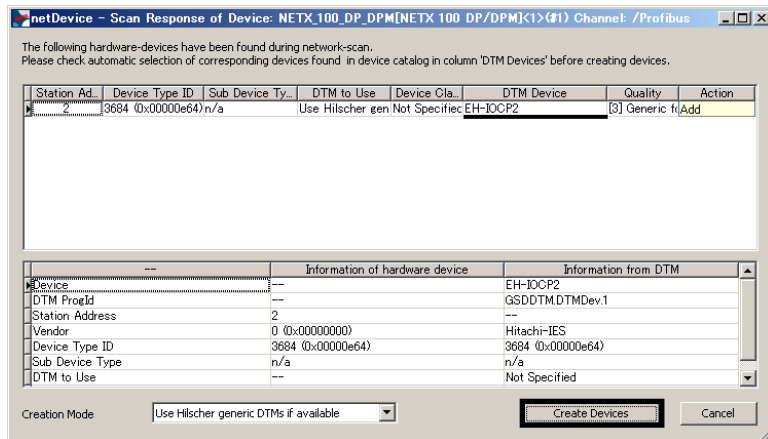
4) Double click a NETX 100 DP/DPM to open netX device window. Check “netX driver” of Driver item.



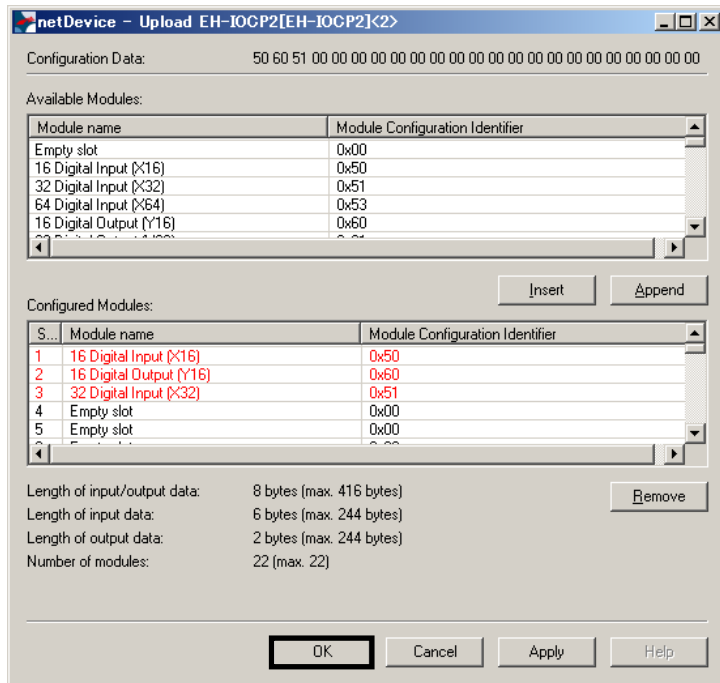
5) Set “all” of Device selection. Click “Scan” to search available device in the network. If netX Driver is found, check and click “OK”.



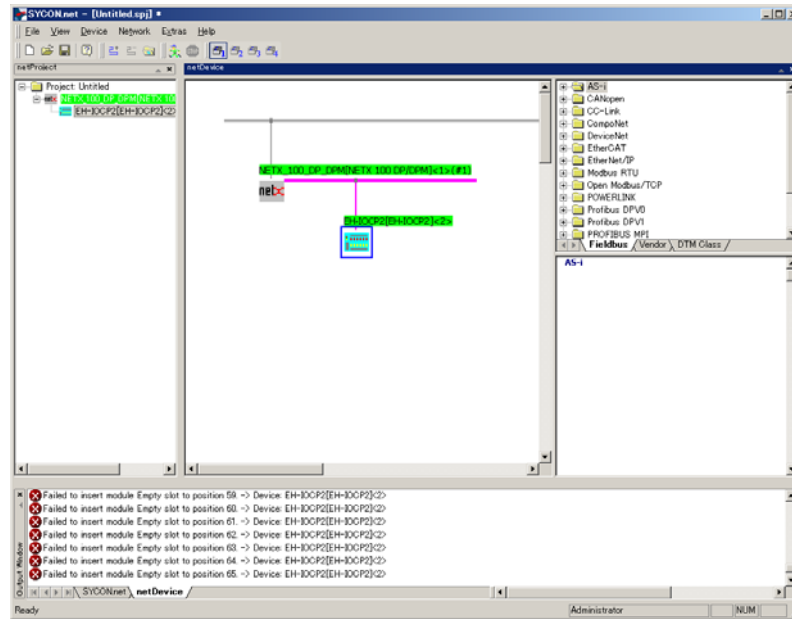
6] Right click on “Network Scan” of NETX 100 DP/DPM. Net device window is appeared. If EH-IOCP2 is found, click “Create Devices” at the right bottom.



7] Configuration window of EH-IOCP2 is appeared. Click “OK”.



8] EH-IOCP is appeared in main windows.



9] Right click on “Download” of NETX 100 DP/DPM.

The operation of SYCON.NET is finished. EHV+ can use EH-RMP2 using %M address.

Cautions are shown below.

- When EH-RMP2 is power on while connect to PC, PC indicates “unknown USB device”.
- EH-IOCP can not be supported auto module configuration.